

The logo for SVV, consisting of the letters 'S', 'V', and 'V' in a bold, sans-serif font. The 'S' is a light teal color, and the two 'V's are a darker teal color. The background features abstract, flowing lines in shades of teal and blue, creating a sense of movement and technology.

# SVV

## **Our Manufacturing Capabilities**

*Supporting the Growth of Innovation and Pioneering the Future of Technology*

● Shenzhen ● Palo Alto ● Berlin

© SVV

# Manufacturing Overview

SVV's flexible manufacturing platform was established in 2016. We focus on complex B2B products. Our platform is designed to sustain low-volume production, from very small batches up to 10K+ quantity

Our manufacturing covers:

- Organizing the new product introduction process
- Assembly fixture designing and processing
- Standardize assembly process
- Functionality, reliability, and environmental testing

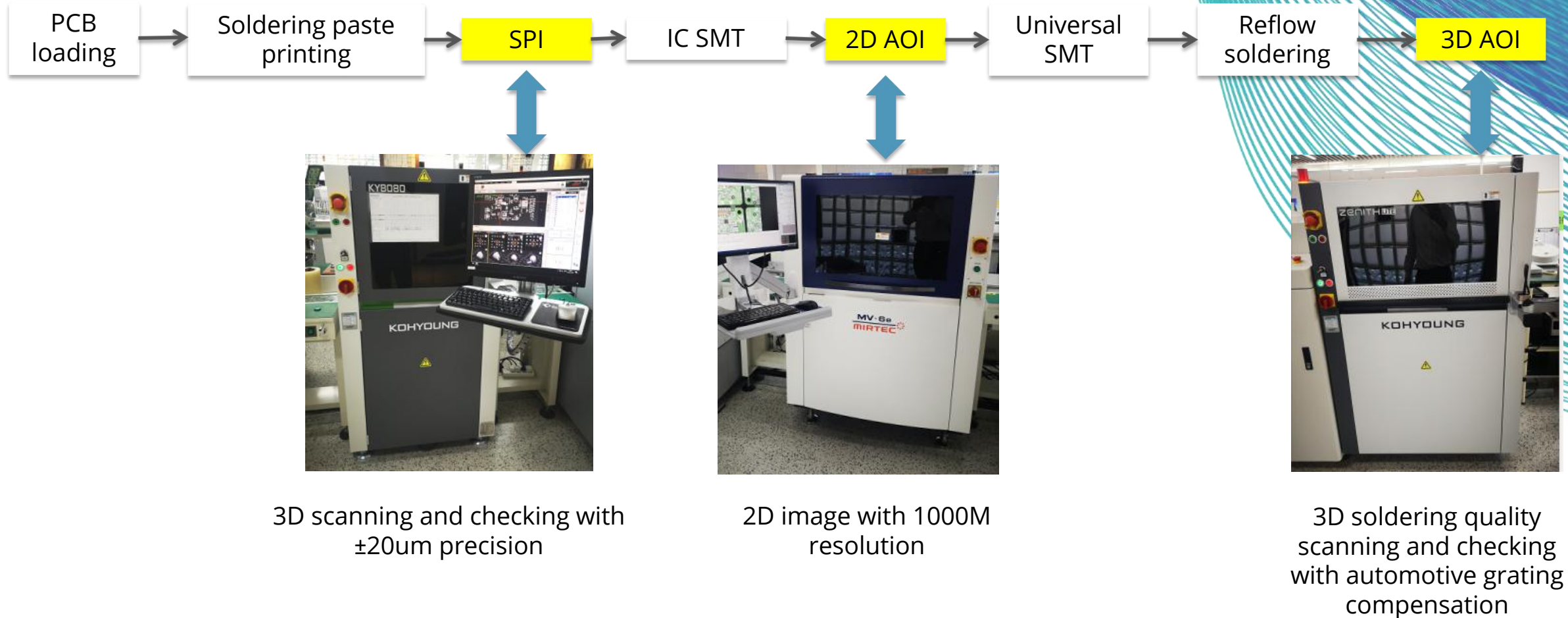
## Overall facilities

- 3x SMT lines ( 2x customized flexible SMT lines to support PCBA quantity <10pcs with high efficiency)
- 8x assembly lines
- 50+ testing and production equipment
- 2500 m<sup>2</sup> engineering lab
- 6000 m<sup>2</sup> manufacturing center

# Contents

- SMT processing flow chart
- SMT line full picture and equipment
- DIP & assembly flow chart
- MES & ERP system
- Assembly equipment
- Packaging equipment
- Testing instruments
- Mechanical processing equipment

# SMT processing flow chart



# SMT Line Full Picture and Equipment



# SMT Line Equipment



Automatic solder paste stencil printing machine



Automatic solder paste spray printing machine



SMD material smart storage tower



High speed surface mounting machine



Multifunctional surface mounting machine



Flexible surface mounting machine



14 temperature area reflow soldering oven

# SMT Offline Detection and Analysis Instrument



FAI tester



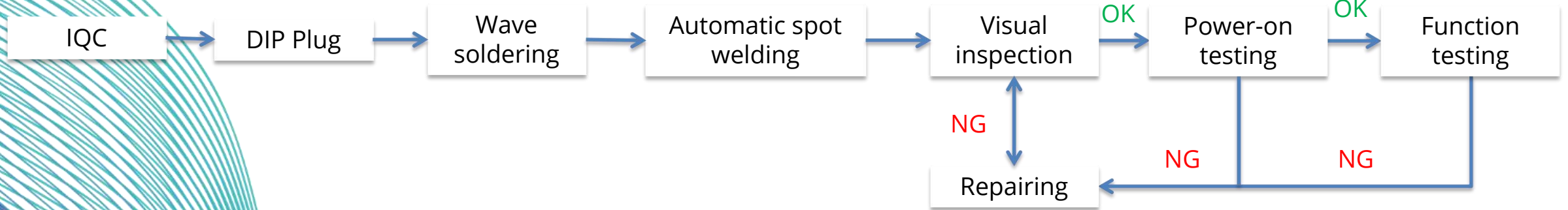
Metallographic microscope



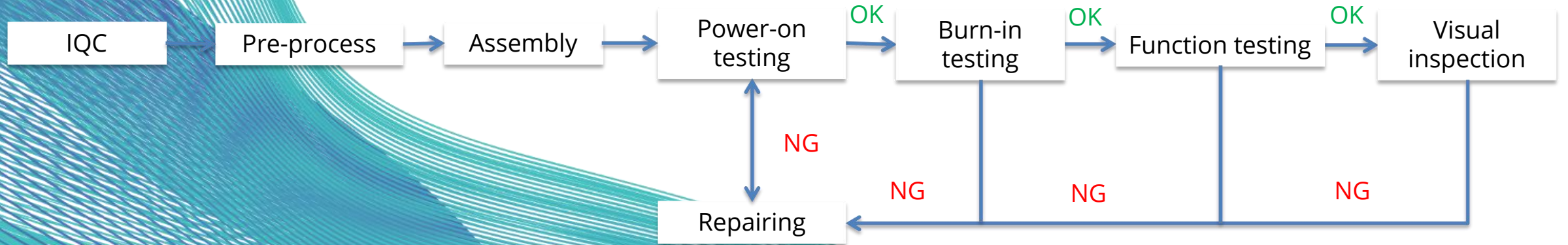
X-RAY detector

# DIP & ASSY Flowchart

## DIP



## ASSY

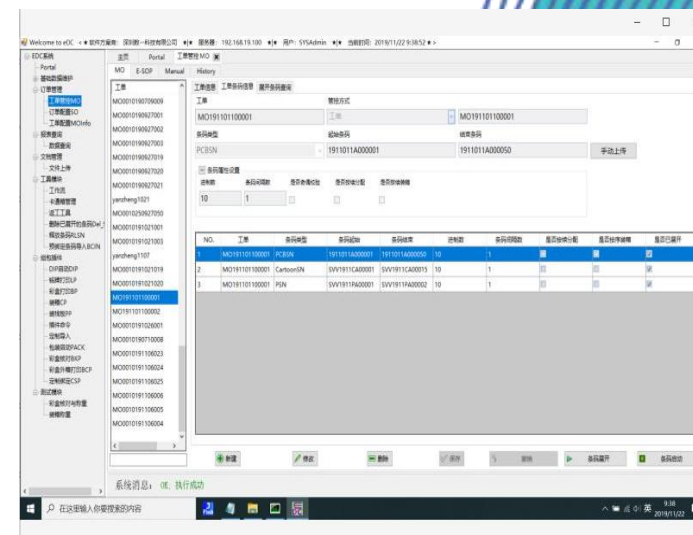
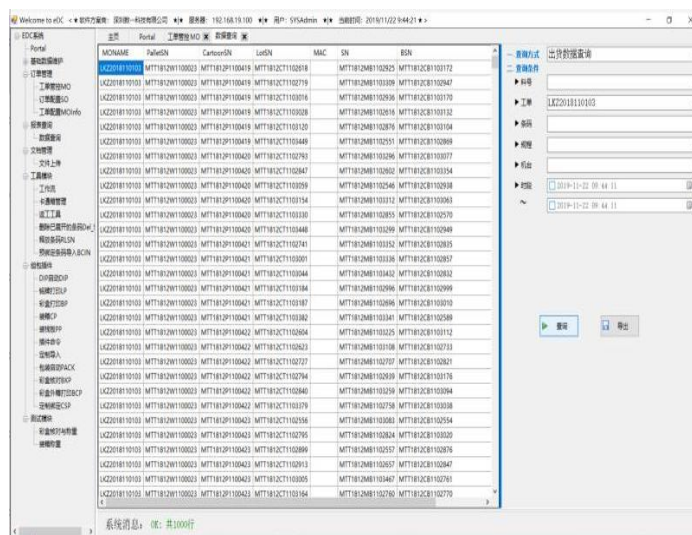




# MES System & ERP System

Whole manufacturing processing is tracked by MES

All project/product/processing is fully managed by ERP



Time To Get It Made

# Assembly Equipment



Universal PCB split machine



V-groove PCB split machine



Automatic dispenser



Flexible cell line



Automatic spot soldering machine



Precision ultrasonic welding machine



High-precision air tightness tester

# Packaging Equipment



Automatic film packaging machine



Vacuum packaging machine



Heat seal packaging machine

# Testing Instruments



CMW500 Wideband radio communication tester



WT-208C Wireless connectivity tester



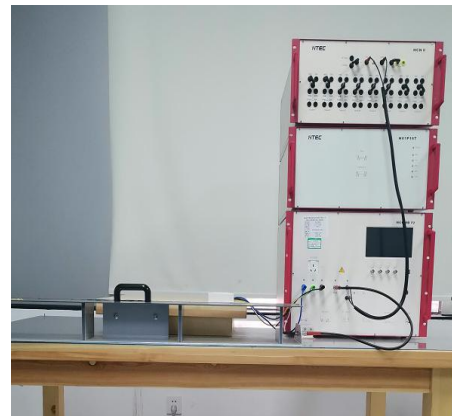
GPS Signal Amplifier



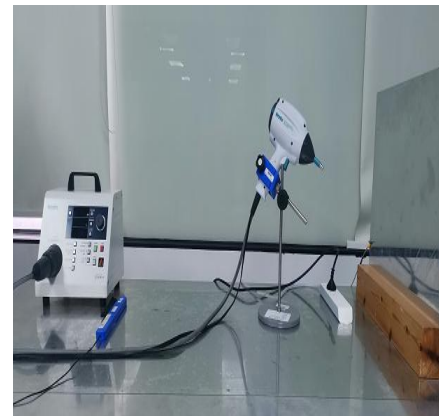
ABTEC Audio Analyzer



3M Anechoic chamber



Surge/EFT Tester



ESD tester

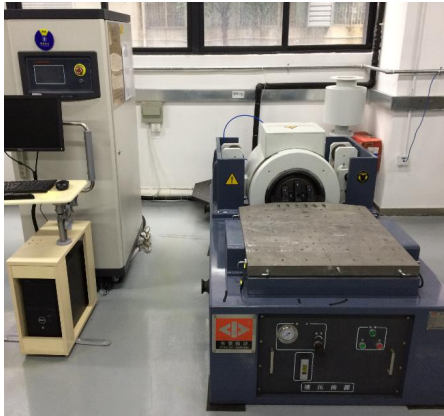
# Testing Instruments



Thermal Shock Chamber



Temperature-Humidity Chamber



Vibration Tester



Salt Mist Test Chamber



Dust Test Chamber



Rain Test Chamber



Fracture strength testing machine

# Testing Instruments



Rolling Drop Tester



Single column tensile testing machine



RCA paper tape abrasion tester



Alcohol & rubber enduring friction tester



Plug and pull force tester

# Mechanical processing equipment



Multi-material Mixed 3D Printer



2000W 3D laser welding&cutting Robot



6000W laser cutting machine



High precision 3D Printer



Vacuum modeling machine



5-Axis CNC center

# Mechanical processing equipment



Milling machine



Sawing machine



Lathe



3-coordinates measuring machine



Height measuring instrument





# SVV

## Time To Get It Made

**Website:** <https://SVV.IO>

**Email:** SVV@SVV.IO

**Phone:** (+86) 137 2340 4102